

THE PERFECT CUT

MW SERIES TREE SHEAR

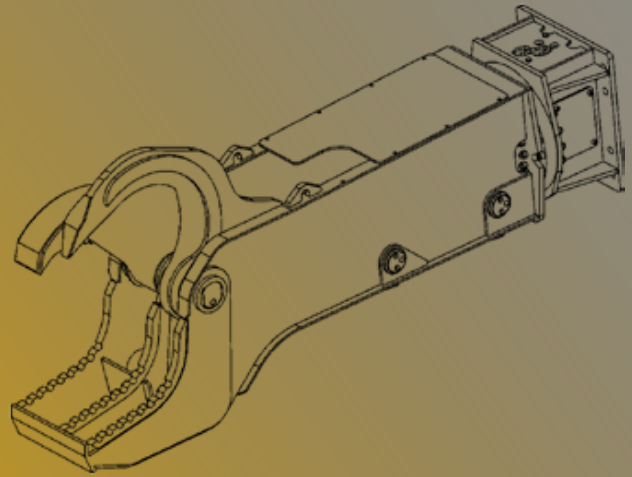
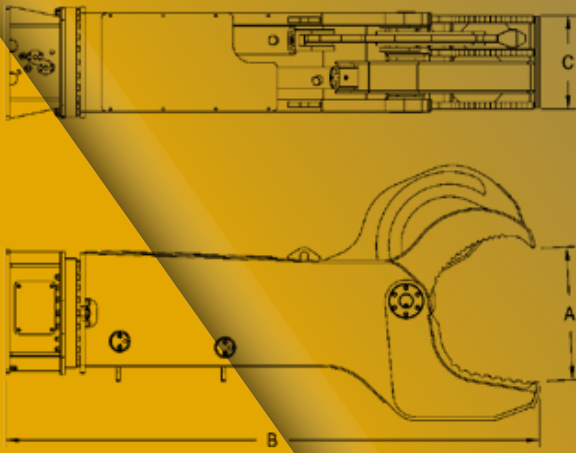
FORESTRY

The MW series is designed to fell high-stem bushes, logs and also for reducing trees. It has a positioning boom and a cutting blade, making it able to position and cut the log. It is able to perform these two functions separately without the help of additional hydraulic connections on the excavator because of an integrated hydraulic system. Two strong cylinders guarantee high productivity standards, especially in the recycling phase of the operation.

MW advantages:

- Security
- Productivity
- Waste reuse and recycling





MODEL MW	U.M.	MW 15	MW 20
OPENING (A)	<i>mm</i>	700	850
	<i>in.</i>	27,56	33,46
LENGTH (B)	<i>mm</i>	2720	3045
	<i>in.</i>	107	120
DEPTH (C)	<i>mm</i>	440	530
	<i>in.</i>	17,32	20,87
EXCAVATOR WEIGHT	<i>Ton</i>	12/18	20/30
	<i>lbs</i>	26455/ 39683	44092/ 66139
EQUIPMENT WEIGHT	<i>Kg</i>	1350	1750
	<i>lbs</i>	2976	3858
MAX PRESSURE	<i>Bar</i>	300	300
	<i>psi</i>	4350	4350
OIL MAX CAPACITY	<i>L/min</i>	180/200	180/200
	<i>gal/min</i>	48/53	48/53
ROTATION OIL PRESSURE	<i>Bar</i>	70	70
	<i>psi</i>	1015	1015
ROTATION OIL CAPACITY	<i>L/min</i>	30	30
	<i>gal/min</i>	8	8